

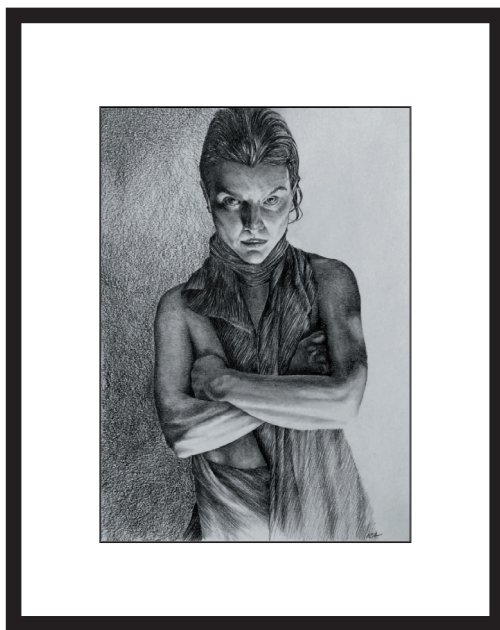
STUDENT EXHIBITION 2
November 10-December 15, 2012
Reception, Saturday, November 10, 3-5 PM

Eligibility Students of the following Instructors are eligible to submit one piece per class. Kevin Beers, Mariella Bisson, Robert Carsten, Tricia Cline, Jon deMartin, Donald Elder, Staats Fasoldt, , Joan Jardine, Elizabeth Mowry, Ron Netsky, Karen O’Neil, Pia Öste-Alexander, Thomas Sarrantonio, Richard Segalman, Lois Woolley, HongNian Zhang. Work must have been completed in class during the past 12 months and not previously exhibited at the school.

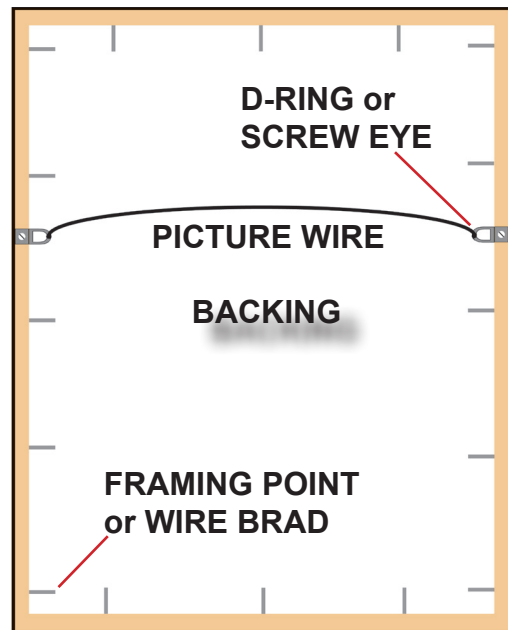
Drop off is November 13-14, Tuesday & Wednesday, 10 AM to 2 PM. No exceptions.

Pick up is at the close of the show, December 15, between 9 AM & 3 PM. No exceptions.

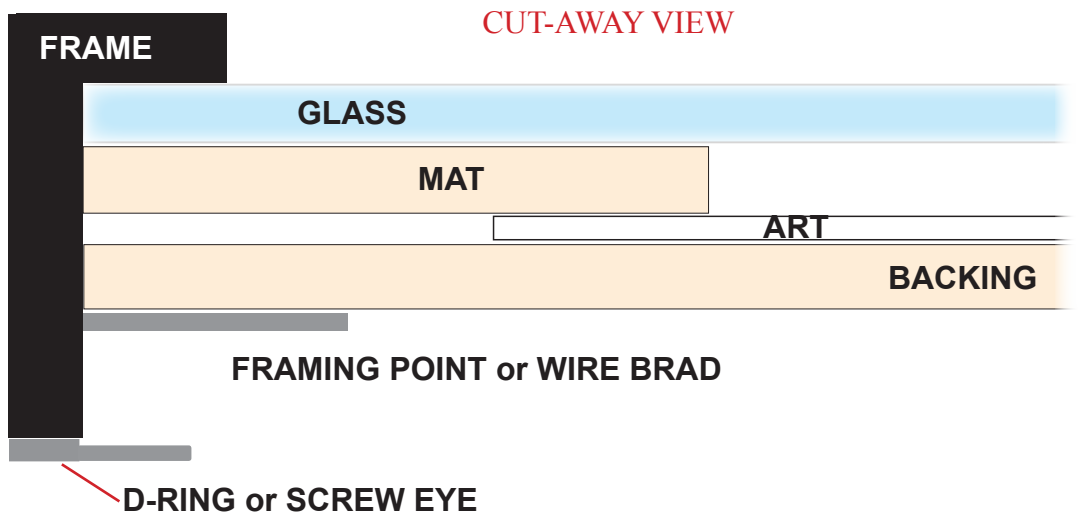
Framing 2 dimensional work must be properly framed, glazed, wired, and ready to hang (see illustrations). No sawtooth hangers, clip frames or similar hardware. Use d-ring hangers (available at art supply houses and hardware stores) or screw eyes for securing wire. Use framers points or wire brads to attach backing, etc., to frame. Do not use tape.



FRONT VIEW

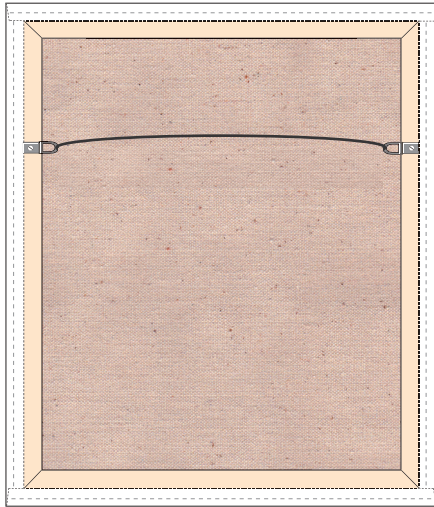


BACK VIEW



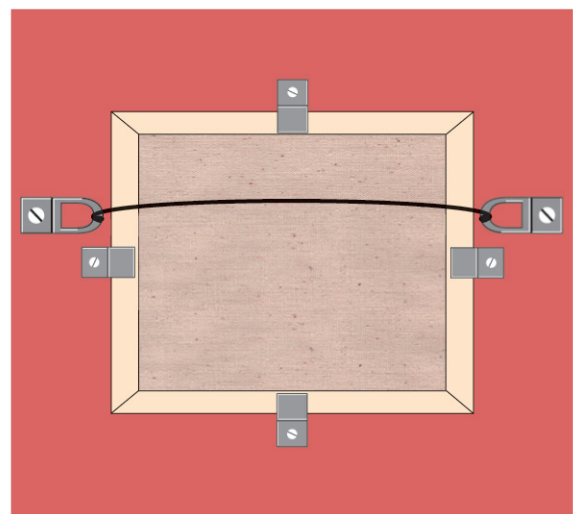
CUT-AWAY VIEW

Gallery wrap is a method of stretching the canvas so it wraps around the sides of the painting and is secured to the back. The result is no unsightly hardware (such as nails or staples) or raw canvas or wood on the sides of the painting, producing a frame-less gallery ready look. Screw eyes or d-ring hangers must be attached to the two opposing vertical stretchers—not to the top horizontal stretcher. Picture wire must be secured to the hangers and be relatively taut.



2) There are three options for the sides of your frame-less painting. Some artists leave the pristine white of the gessoed canvas, being careful not to get any paint on the sides (this can be facilitated by taping the sides), while others paint the sides a solid color. Still others keep the painting going on the sides (shown), producing a slight three dimensional effect to the artwork.

A traditional frame serves two functions. First and foremost a properly selected frame will enhance the presentation of the artwork. A frame allows the artist to paint on the support of their choice from stretched canvas to panels, while providing protection to the artwork.



The frame needs to be wired and the picture secured to the frame as shown above.