

PAINTED JOURNEYS  
ON THE COLORADO PLATEAU

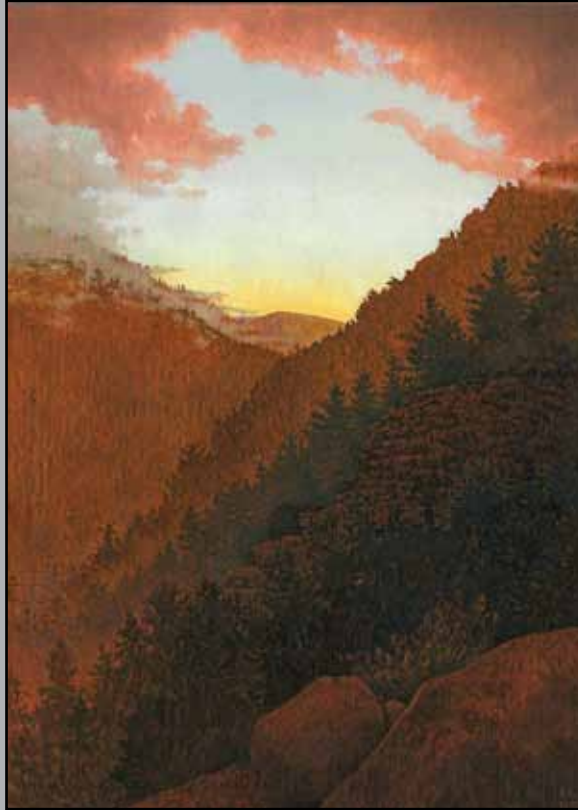
October 18 - November 1, 2008

# **Judy Abbott   Katherine McKenna   Eva van Rijn**

In the fall of 2007, Abbott, McKenna and van Rijn were invited to participate in the Artist Residency Program at the Museum of Northern Arizona, Flagstaff, to interpret the Colorado River.

The paintings in this preview exhibition at the Woodstock School of Art represent the body of work developed during the residency and will travel to the museum for a 6 month exhibition, which opens in December 2008 and runs through April 2009.

# Judy Abbott



*Oak Creek Canyon Sunset*



*Oak Creek Canyon Sunset*



*Kelly Canyon*



*Hopi Farmlands*



*Jackass Canyon*



*Near Red Mountain*



*On The Rez*



*Sycamore Canyon*



*Ponderosa Pines II*

# Katherine McKenna



*Between Tunnel and Crow*



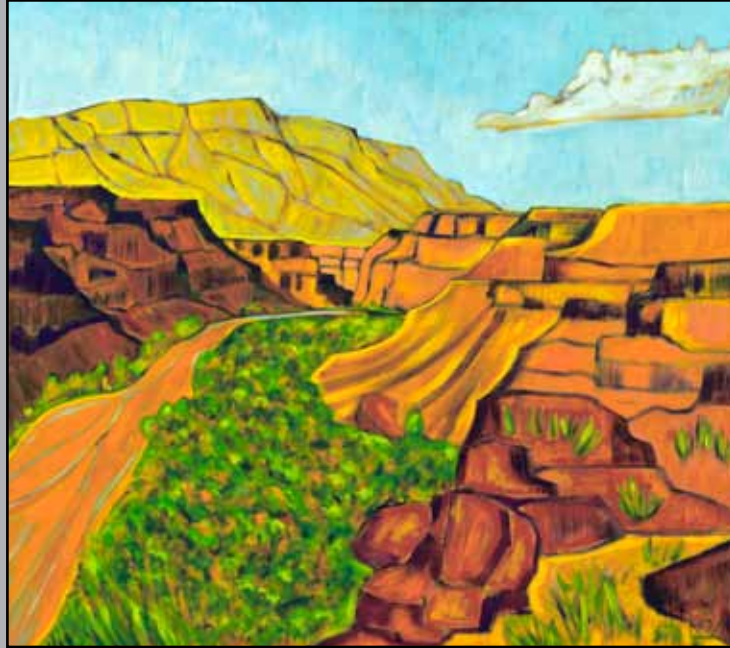
*Colorado River Gorge*



*Katsina Point*



*Oak Creek Canyon Sunset*



*Little Colorado River II*



*Navajo Mountain Road, Utah*



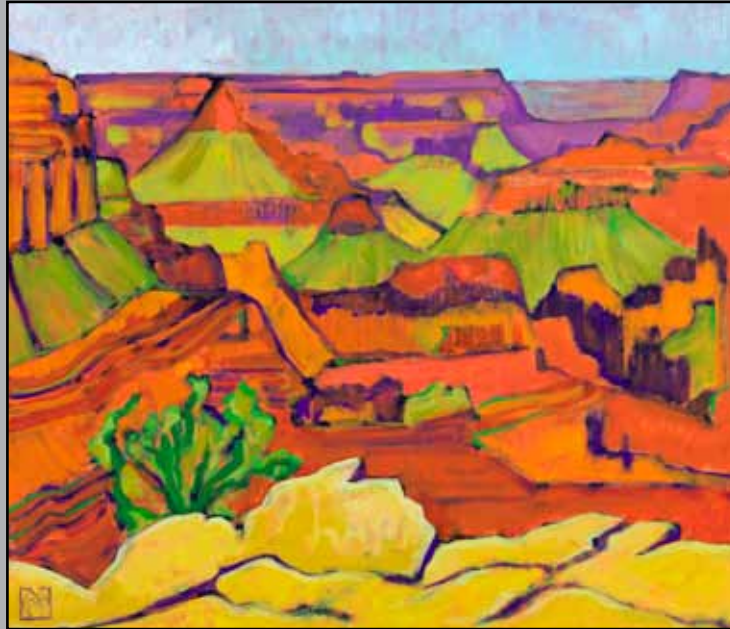
*Navajo Mountain, Utah*



*Sacred Peaks*



*The Grand Canyon*



*Yaqui Point*

# Eva van Rijn



*Canyonland Sphinx*



*Checkerboard Mesa*



*Cottonwood Creek*



*Dinosaur Country*



*Dinosaur Country 2*



*Female Rain*



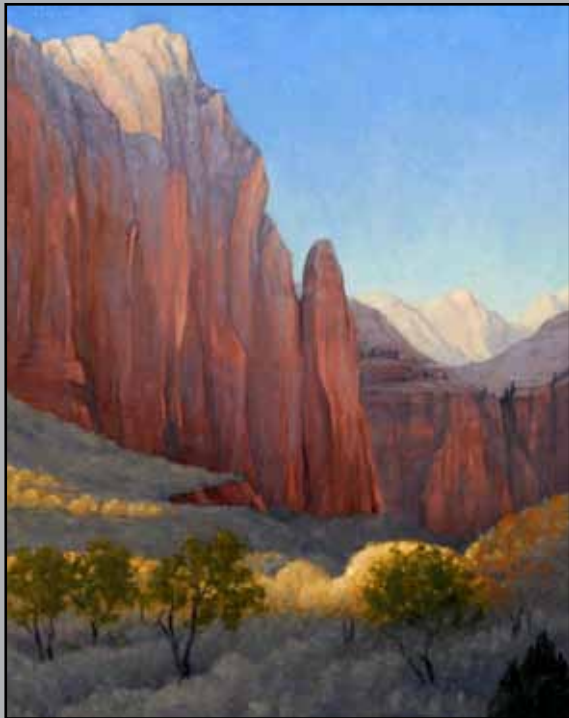
*Long Way Down, Grand Canyon*



*Piedre Lumbre*



*Storm Over Flagstaff*



*Zion Sunrise*